

## NEWS RELEASE

### FOR IMMEDIATE RELEASE:

Oct. 13, 2020

### CONTACT:

Nancy Nydam  
404-657-2462

## DPH Provides Update on COVID-19 Trends in Georgia

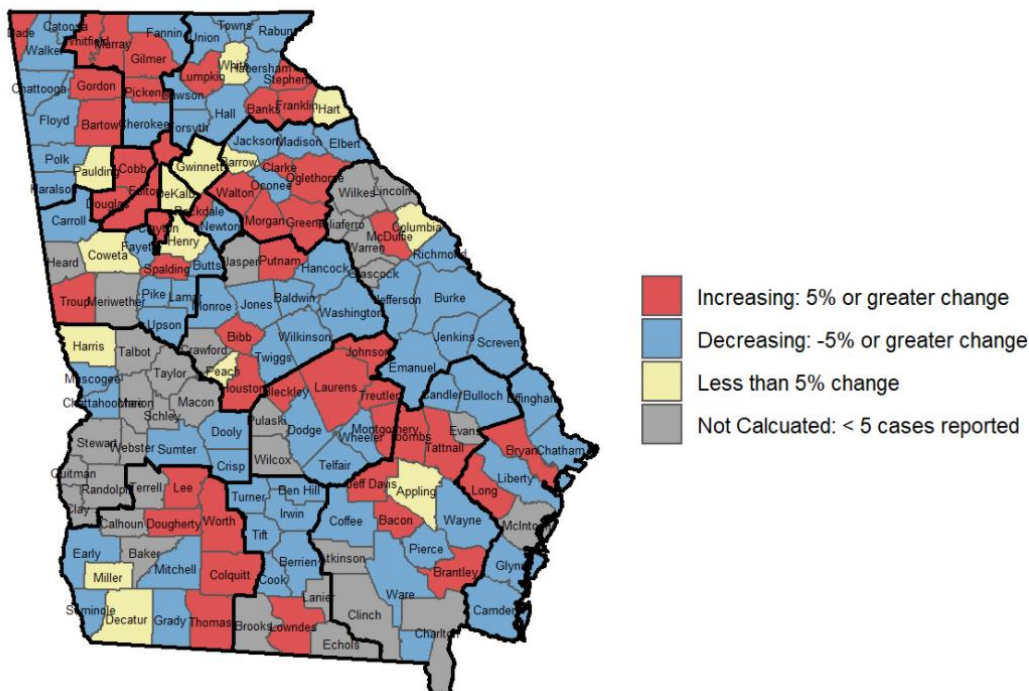
**Atlanta** – The Georgia Department of Public Health (DPH) is providing the following information regarding the fight against COVID-19 in Georgia:

### COVID-19 Cases

- From **10/6 to 10/12**, the seven-day average of new cases reported **increased 4.3%**.
- The seven-day average of new cases reported is **down 66%** from our peak July 24.
- As of Oct. 13, there are **333,304 confirmed cases of COVID-19 and approximately 23,479 probable cases of COVID-19**, most identified through antigen testing. (A probable case meets at least one of the following criteria: has a positive antigen test on a respiratory specimen; OR has not had a confirmatory COVID-19 test but has symptoms compatible with COVID-19 AND a known exposure to a COVID-19 case; OR the individual has died and the death certificate lists COVID-19 disease or SARS-CoV-2 as an underlying cause of death or a significant condition contributing to death.)

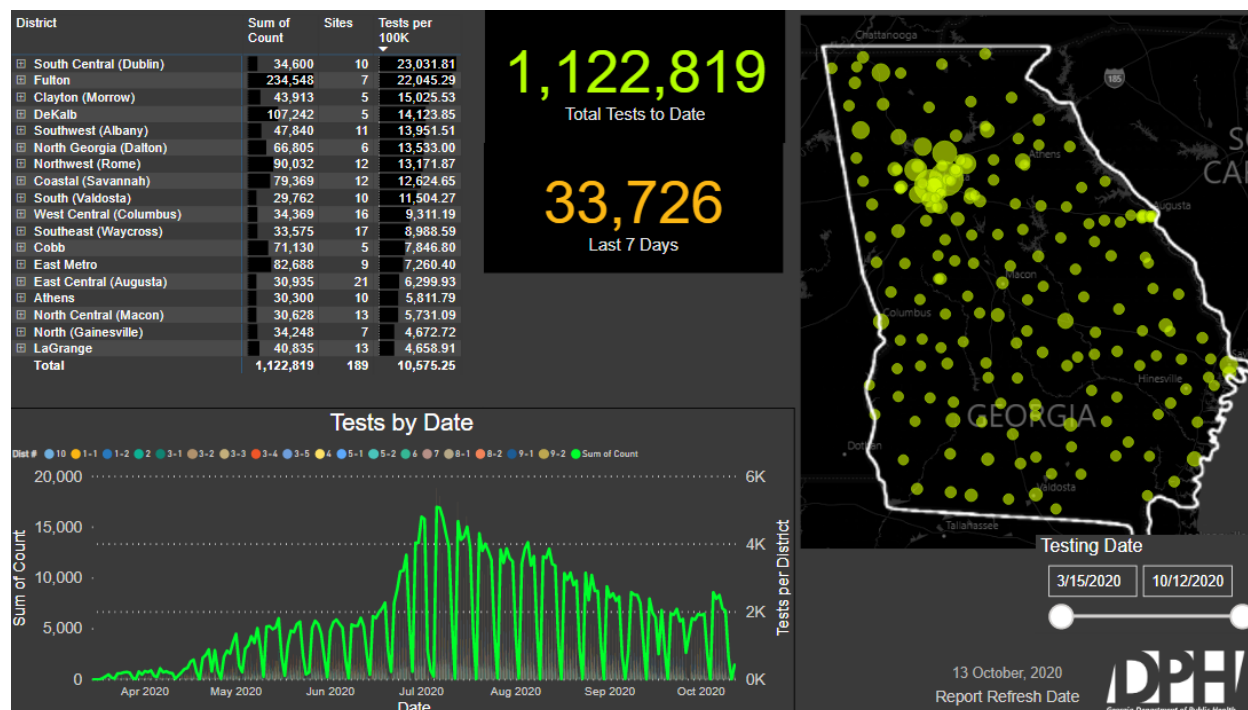
### Confirmed COVID-19 Cases

Percent Change 09/26-10/02, 10/03-10/09



## COVID-19 Testing

### Georgia SPOCs



- As of Oct. 13, the state reported 3,180,548 (cumulative) COVID-19, tests reported to DPH through Electronic Laboratory Reports (ELR).
- The number of specimens collected at DPH SPOCs is **1,122,819**
- DPH is operating 189 SPOCs, including mobile and pop-up locations statewide.

### Positivity Rate

The statewide percent positivity (7-day moving average) for PCR test **decreased** from 7% on Oct. 5 to **5.8% on Oct. 13**.

### Hospitalizations

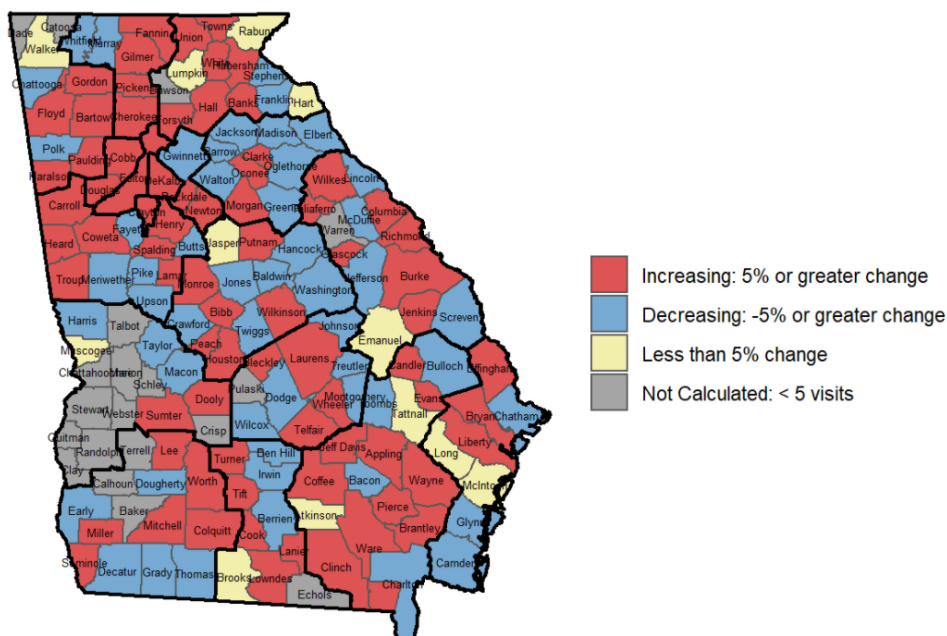
Daily hospitalizations for COVID-19 have increased 4.2% from 1,271 on Oct. 5 to 1325 on Oct. 13. Hospitalizations have **decreased 59%** since a daily high of 3,200 on July 30.

### Emergency Department Visits

Emergency Department (ED) visits related to COVID-19 and ILI (influenza-like illness) have remained flat statewide over the two week period Sept. 26 – Oct. 9

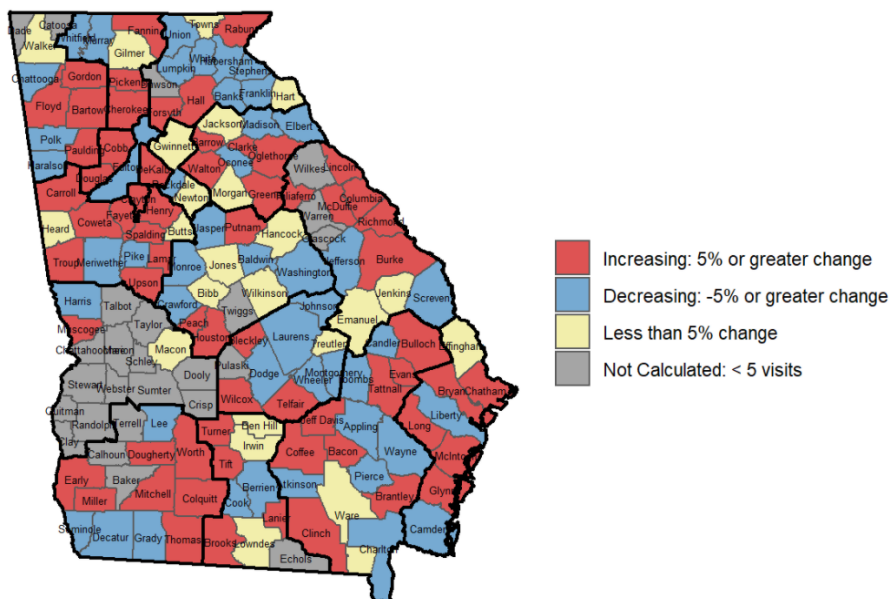
## Emergency Department (ED) Visits with COVID-19 Syndrome

Percent Change 09/26-10/02, 10/03-10/09



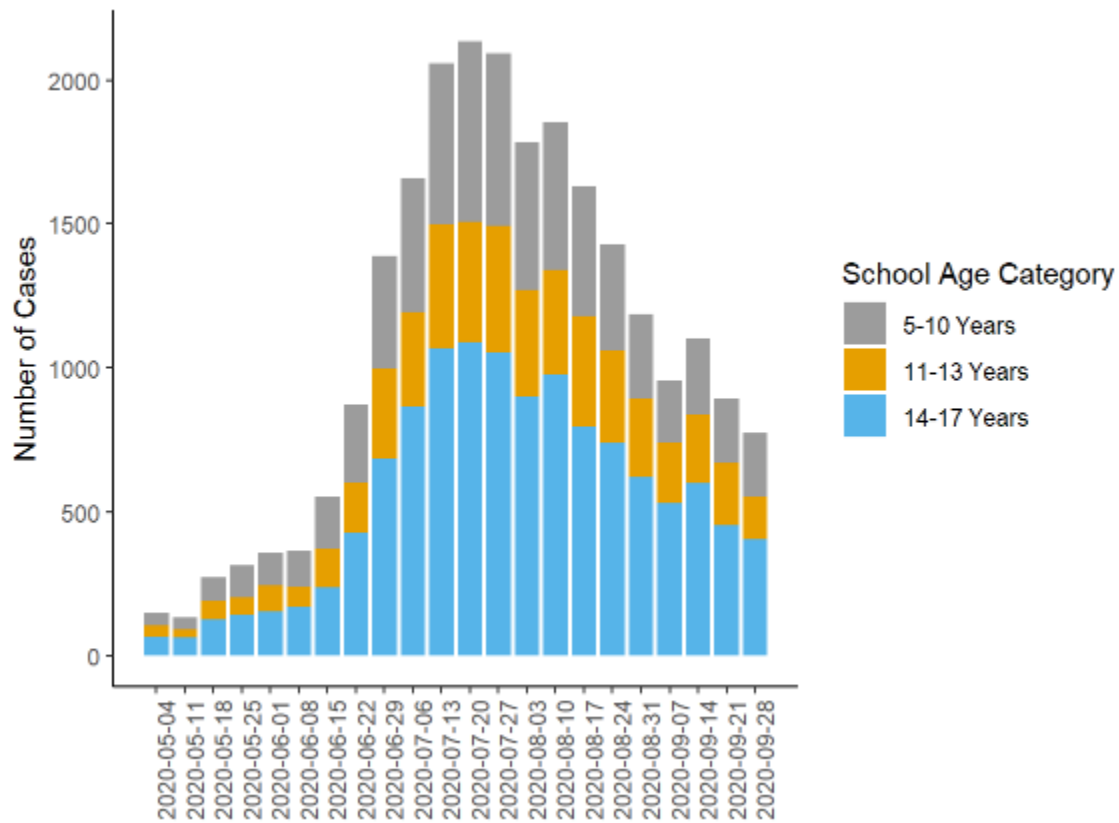
## Emergency Department (ED) Visits with ILI Syndrome

Percent Change 09/26-10/02, 10/03-10/09



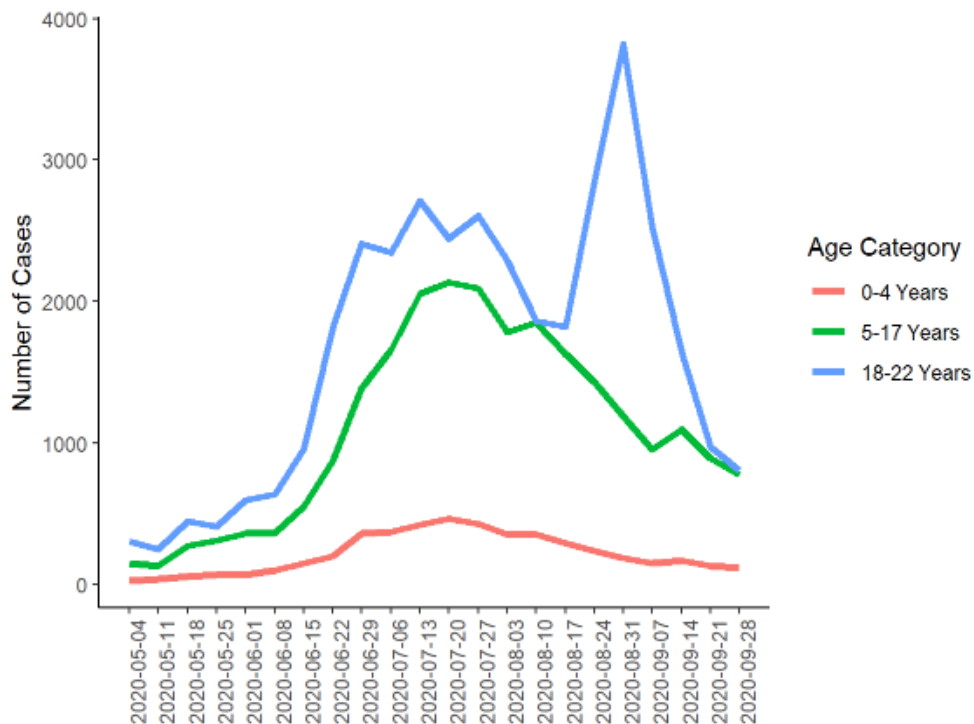
The Georgia Department of Public Health monitors influenza (flu) activity year-round throughout the state with the help of volunteer sentinel healthcare providers. Influenza activity is calculated based on the percentage of provider visits that are for "influenza-like illness" (fever  $>100^{\circ}$  F AND cough and/or sore throat). Click on this link to see the [Flu Surveillance Report Sept. 27 - Oct. 3.](#)

### **COVID-19 Cases Among K-12 School Aged Children\***



\*Report reflects Sept. 28 - Oct. 3

### **COVID-19 Cases by Age Category (Ages 0-22)\***



\*Report reflects week of Sept. 28 – Oct. 3

### **Outbreaks**

Oct. 4-10: **96 (increase of 26 from previous week)**

These outbreaks are occurring in settings where people are physically congregating and underscore the need for physical distancing and source control. The highest number of outbreaks occurred in schools, long-term care facilities, correctional facilities and workplaces.

Setting	10/4-10/10	Change from Previous Week	Grand Total
Long-term Care Facility/Nursing Home	18	+7	768
School	27	+10	359
Workplace, Not Cafeteria	11	+1	237
Prison/Jail	6	+2	231
Manufacturing Facility	3	-3	172
Restaurant Or Deli	3	+1	91
Church/Temple	5	+4	86
Other Congregate Setting	4	+1	83
Day Care Center	7	+3	75
Hospital	2	-2	67
Other	2	-2	67
Food Production Facility			52
Office Setting	2	+1	43
Outpatient (Non-dialysis)	1	-1	41
Shelter		-1	39
Grocery Store	1	+1	29
Other Inpatient Facility/Detox Facility	1	+1	29
Farm			19
Construction Site			17
Mental Hospital	1	+1	17
Bar/Entertainment Venue			13
Funeral			11
Camp			9
Hotel			9
Military Facility			7
Dialysis Center			6
Community			5
Private Home	1	+1	5
Wedding Reception			5
Resort			3
Convention Center			1
Mental Health (Non-hospital)	1	+1	1
Picnic/Cookout/Potluck			1
Swimming Pool			1
Unknown			1
Water Park			1
Workplace Cafeteria			1



