

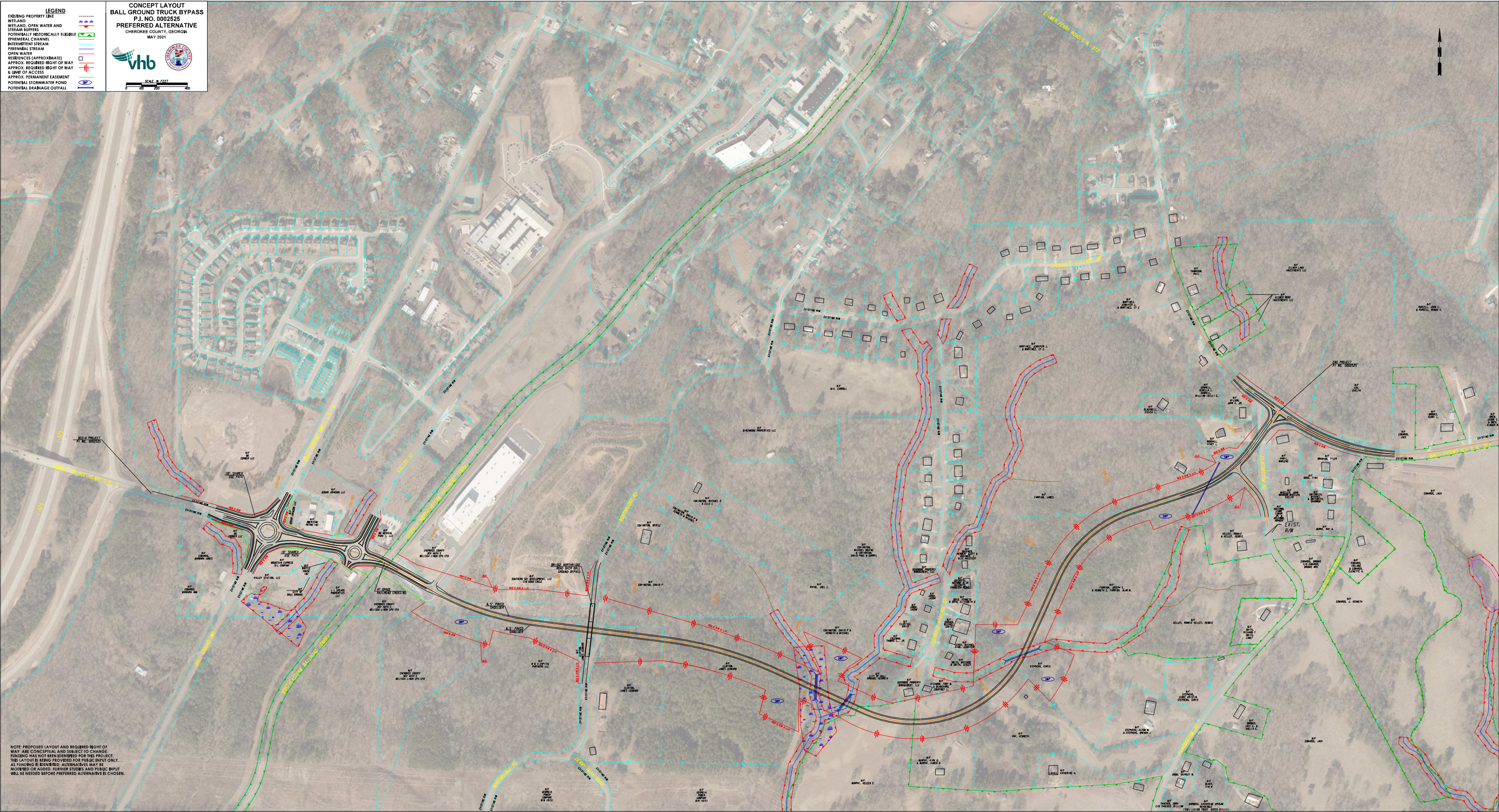
LEGEND

- EXISTING PROPERTY LINE
- WETLAND
- WETLAND, OPEN WATER AND STREAM BUFFERS
- POTENTIALLY HISTORICALLY ELIGIBLE
- EPHEMERAL CHANNEL
- PERENNIAL CHANNEL
- PERENNIAL STREAM
- OPEN WATER RESIDENCES (APPROXIMATE)
- APPROX. REQUIRED RIGHT OF WAY
- APPROX. REQUIRED RIGHT OF WAY & LIMIT OF ACCESS
- APPROX. PERMANENT EASEMENT
- POTENTIAL STORMWATER POND
- POTENTIAL DRAINAGE OUTFALL

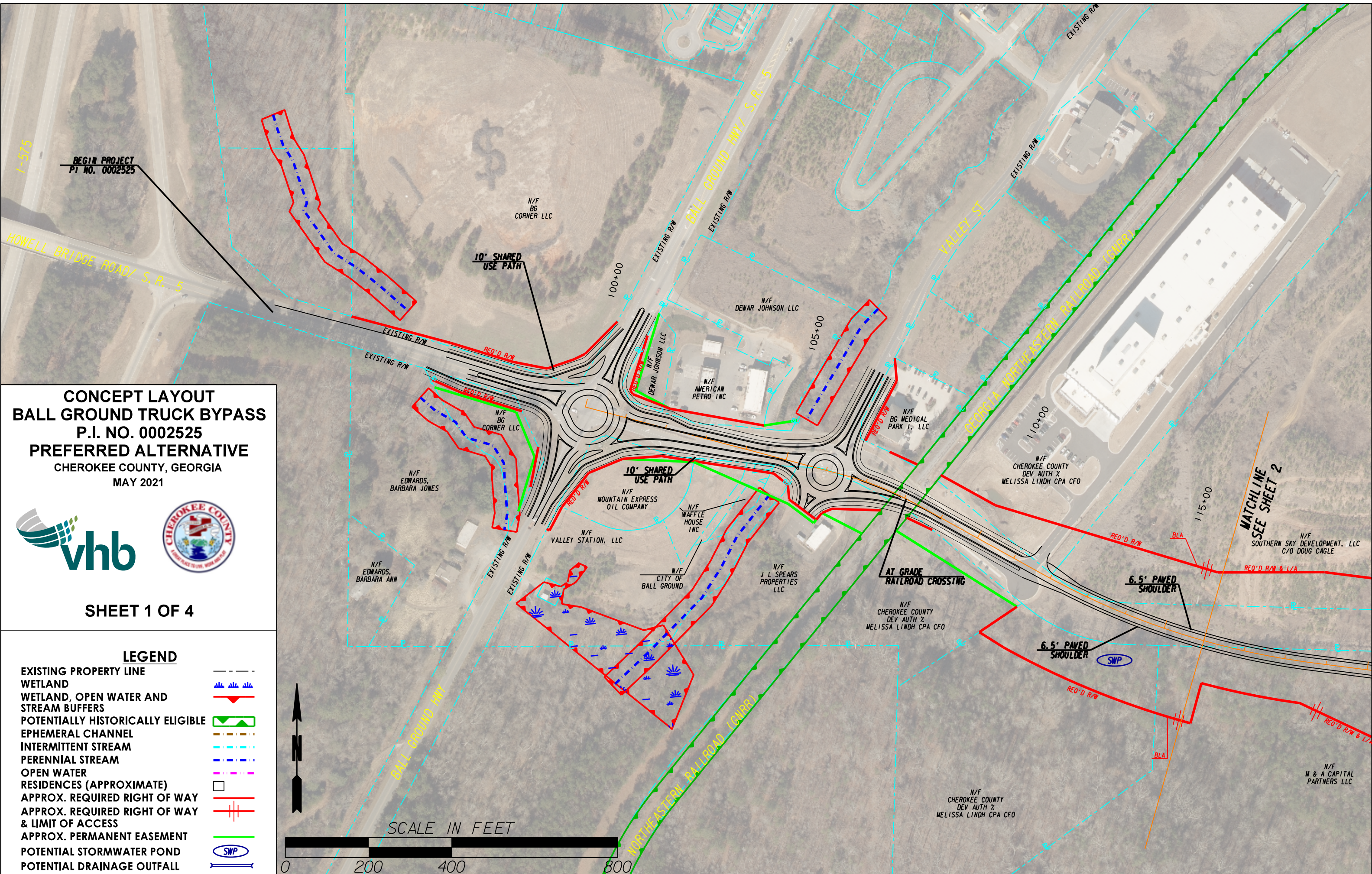
**CONCEPT LAYOUT
BALL GROUND TRUCK BYPASS
P.I. NO. 0002525
PREFERRED ALTERNATIVE
CHEROKEE COUNTY, GEORGIA
MAY 2021**

vhb

SCALE: 1" = 100'



NOTE: PROPOSED LAYOUT AND REQUIRED RIGHT OF WAY ARE CONCEPTUAL AND SUBJECT TO CHANGE. FUNDING HAS NOT BEEN IDENTIFIED FOR THIS PROJECT. THIS LAYOUT IS BEING PROVIDED FOR PUBLIC INPUT ONLY. AS FUNDING IS IDENTIFIED, ALTERNATIVES MAY BE MODIFIED OR ADDED. FURTHER STUDIES AND PUBLIC INPUT WILL BE NEEDED BEFORE PREFERRED ALTERNATIVE IS CHOSEN.



**CONCEPT LAYOUT
BALL GROUND TRUCK BYPASS
P.I. NO. 0002525
PREFERRED ALTERNATIVE
CHEROKEE COUNTY, GEORGIA
MAY 2021**

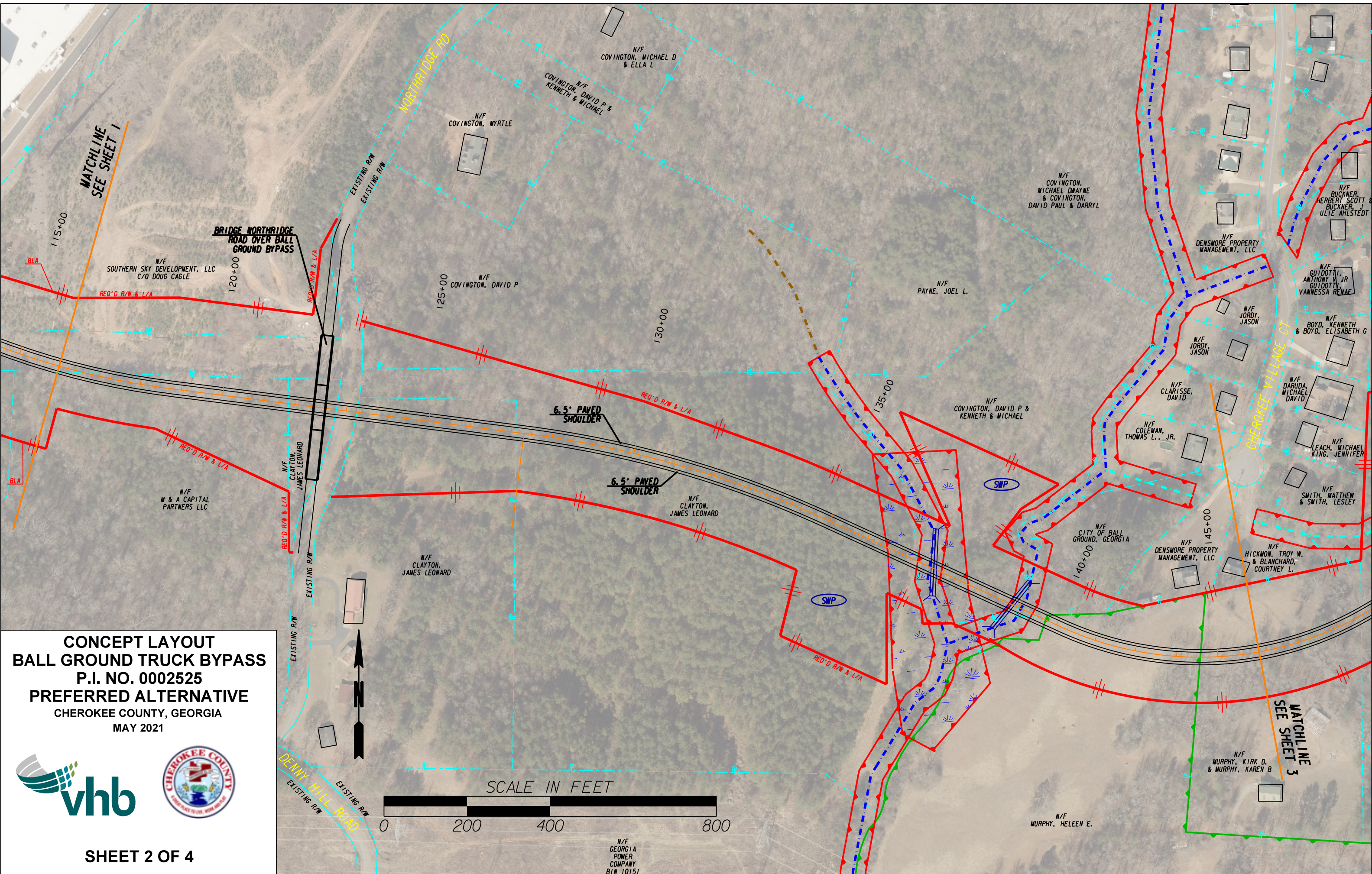


SHEET 1 OF 4

LEGEND	
EXISTING PROPERTY LINE	
WETLAND	
WETLAND, OPEN WATER AND STREAM BUFFERS	
POTENTIALLY HISTORICALLY ELIGIBLE EPHEMERAL CHANNEL	
INTERMITTENT STREAM	
PERENNIAL STREAM	
OPEN WATER	
RESIDENCES (APPROXIMATE)	
APPROX. REQUIRED RIGHT OF WAY	
APPROX. REQUIRED RIGHT OF WAY & LIMIT OF ACCESS	
APPROX. PERMANENT EASEMENT	
POTENTIAL STORMWATER POND	
POTENTIAL DRAINAGE OUTFALL	



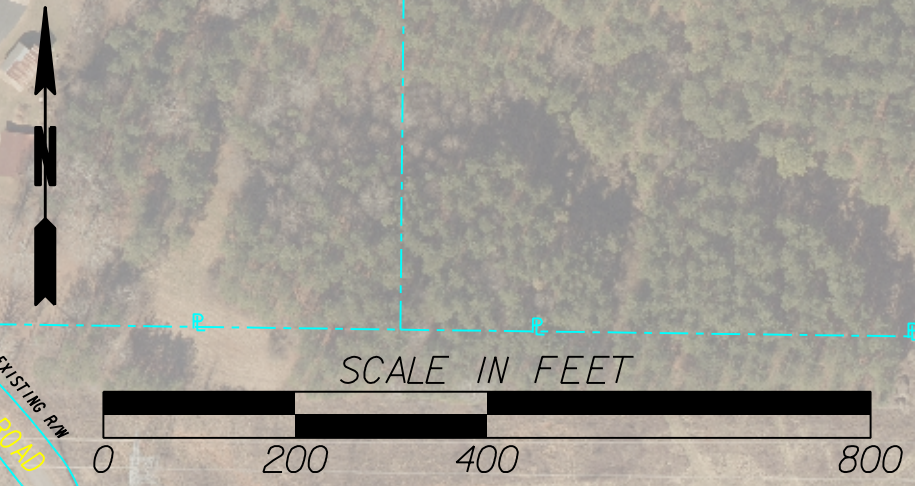
**MATCHLINE
SEE SHEET 2**



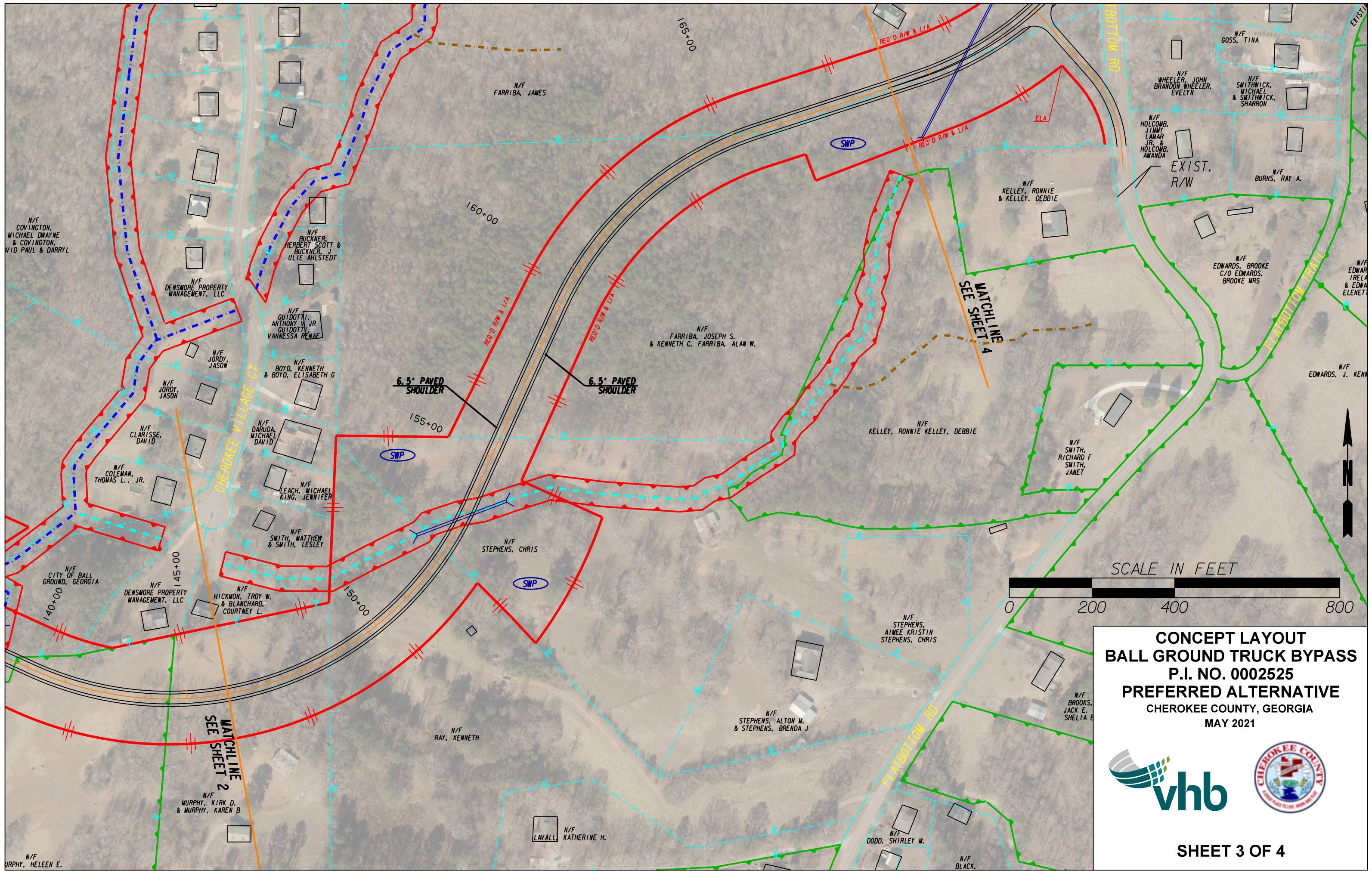
CONCEPT LAYOUT
BALL GROUND TRUCK BYPASS
 P.I. NO. 0002525
PREFERRED ALTERNATIVE
 CHEROKEE COUNTY, GEORGIA
 MAY 2021



SHEET 2 OF 4



N/F
 GEORGIA
 POWER
 COMPANY
 BIN 10151



**CONCEPT LAYOUT
 BALL GROUND TRUCK BYPASS
 P.I. NO. 0002525
 PREFERRED ALTERNATIVE
 CHEROKEE COUNTY, GEORGIA
 MAY 2021**



**CONCEPT LAYOUT
BALL GROUND TRUCK BYPASS
P.I. NO. 0002525
PREFERRED ALTERNATIVE
CHEROKEE COUNTY, GEORGIA
MAY 2021**



SHEET 4 OF 4

